



↑ "Chemical Valley" at Sarnia, Ont., contains the greatest agglomeration of petrochemical-producing plants in Canada.

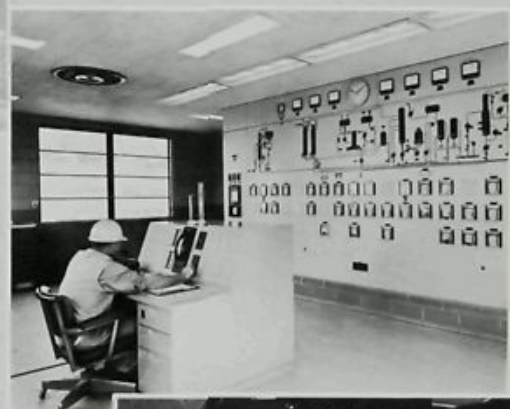
→ One of the largest units in the natural gas processing section of the petrochemical industry is the recently completed multi-company operation at Rimbey, Alta., which produces propane, butane, condensate and sulphur as well as large quantities of sales gas for distribution to markets in Canada and the United States.



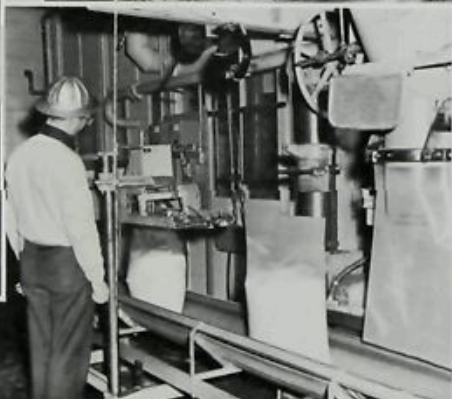
↑ Butyl rubber receives its final drying and mixing on rubber mills.



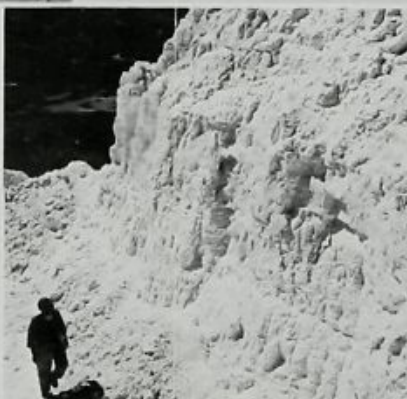
→ Process conditions in all petrochemical plants are regulated in centralized control rooms.



↑ An oxide reaction unit—part of Montreal East's vast chemical complex—where ethylene is converted into ethylene oxide.



← Packaging polyethylene resins and compounds in polyethylene shipping bags.



→ A mountain of rock sulphur extracted from natural gas, stockpiled for eventual shipment to industries across Canada and throughout the world.



↑ Bobbins of synthetic fibre filament yarn are carefully inspected before they leave the plant for use by Canadian textile mills.